

## Lens material

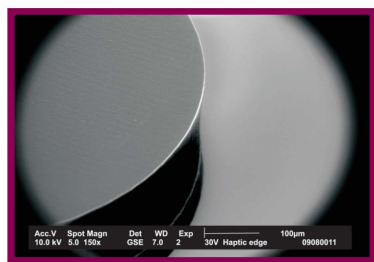
Our intraocular lenses consist of highly bio-compatible, hydrophilic acrylate containing a chemical bounded UV-blocker. The surface of these lenses is hydrophobic.

## Aspheric IOLs

All of our IOLs are aspheric lenses. Simple spheric lenses refract the rays at the peripheric zone at a larger refraction angle than the central rays, resulting in an unsharp focus.

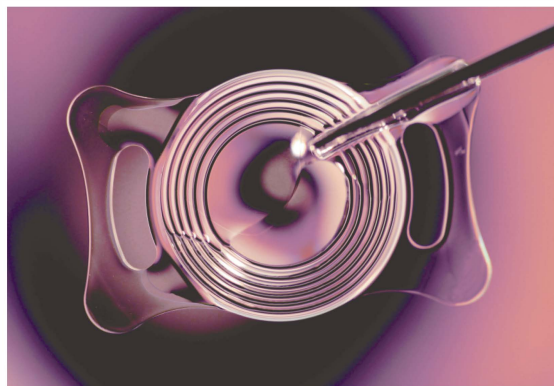
## Square edged haptic and optic

To prevent PCO all our IOLs are absolutely unpolished and therefore truly square-edged.



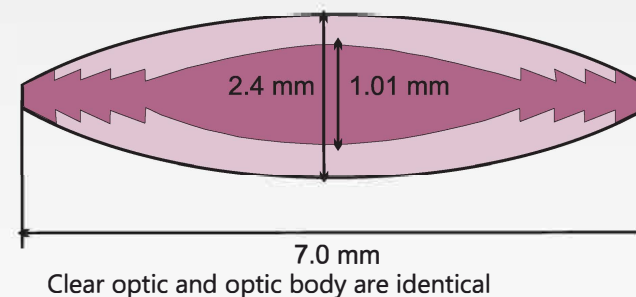
## Haptic design

The haptic design of our IOLs creates perfect centering and extreme stability of the lens in the bag. The cut outs in the haptic absorb the shrinking force of the capsule and allow an additional fixation of the IOL by adhesion of the capsule through the fenestration.



## Aspheric IOL design with diffractive structure

Our aspheric IOLs with their diffractive optic structure (Fresnel principle) unfold very softly and in a controlled manner due to their low center thickness.



- the important characteristic of this design is the very soft opening
- the diffractive structure of the lens border allows a larger optic diameter

For dogs



### Acrivet 30V

Power: +41.0D  
Diameter: 12, 13, 14 mm  
Optic body: 7.0 mm  
Clear optic: 7.0 mm  
Haptic angulation: 0°

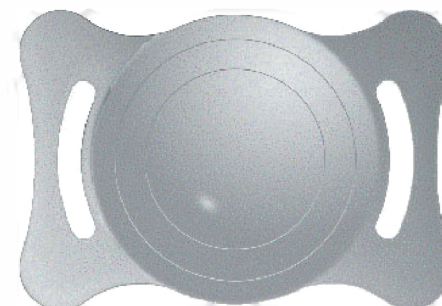
For cats



### Acrivet 20V

Power: +53.5D  
Diameter: 12, 13, 14 mm  
Optic body: 7.0 mm  
Clear optic: 7.0 mm  
Haptic angulation: 0°

For horses



### Acrivet 90V

Power: +14.0D  
Diameter: 21, 22 mm  
Optic body: 12.0 mm  
Clear optic: 12.0 mm  
Haptic angulation: 0°  
Power: +18.0D  
Diameter: 24 mm  
Optic body: 13.0 mm  
Clear optic: 13.0 mm  
Haptic angulation: 0°

## Corneal aberration correcting IOLs for dogs

Corneal aberration correcting lenses, such as our Acrivet 60V and 80V, lead to the best vision after cataract surgery.

These lenses correct the positive spherical aberration like the natural lens. Our Acrivet 60V and Acrivet 80V lenses have a negative aberration and compensate for the positive spherical aberration of the cornea. The optical performance with these lenses is close to the performance of a phakic eye.



### Acrivet 60V

Power: +41.0D  
Diameter: 11, 12, 13, 14 mm  
Optic body: 6.5 mm  
Clear optic: 6.0 mm  
Haptic angulation: 0°

- very good optical result
- easy to implant
- the most popular IOL

The additional 360° square-edged rim prevents/delays PCO.

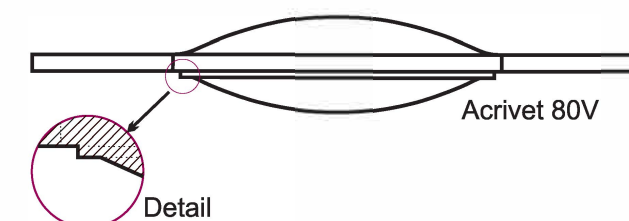


### Acrivet 80V

Power: +41.0D  
Diameter: 12, 13, 14 mm  
Optic body: 6.5 mm  
Clear optic: 6.0 mm  
Haptic angulation: 0°

## Continuous barrier effect

The complete 360° continuous square-edged rim not only enhances the protection at the haptic-optic junction but prevents the migration of lens epithelial cells from the equatorial region onto the posterior capsule and delays PCO.



See all our other products:

[www.acrivet.eu](http://www.acrivet.eu)

**BAUSCH + LOMB**  
A company of Valeant Pharmaceuticals International, Inc.

**Acrivet**